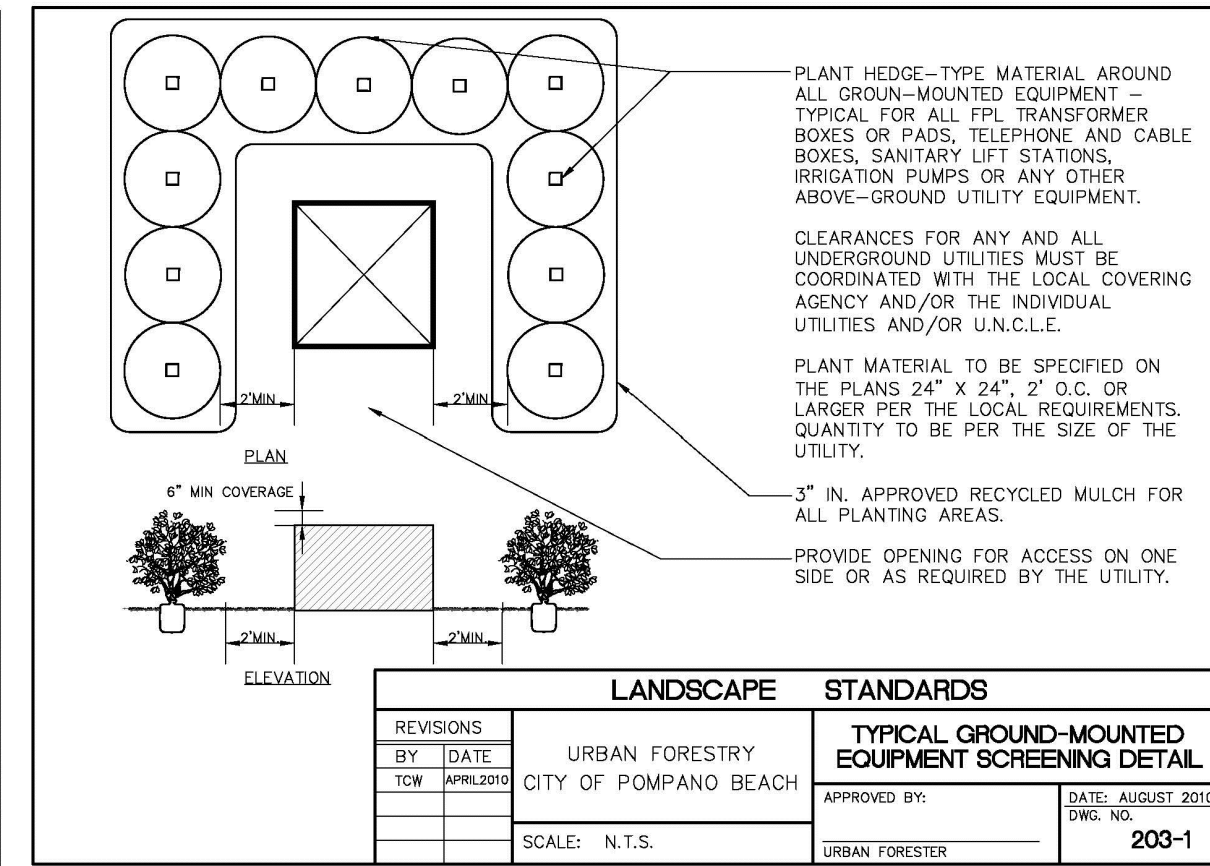
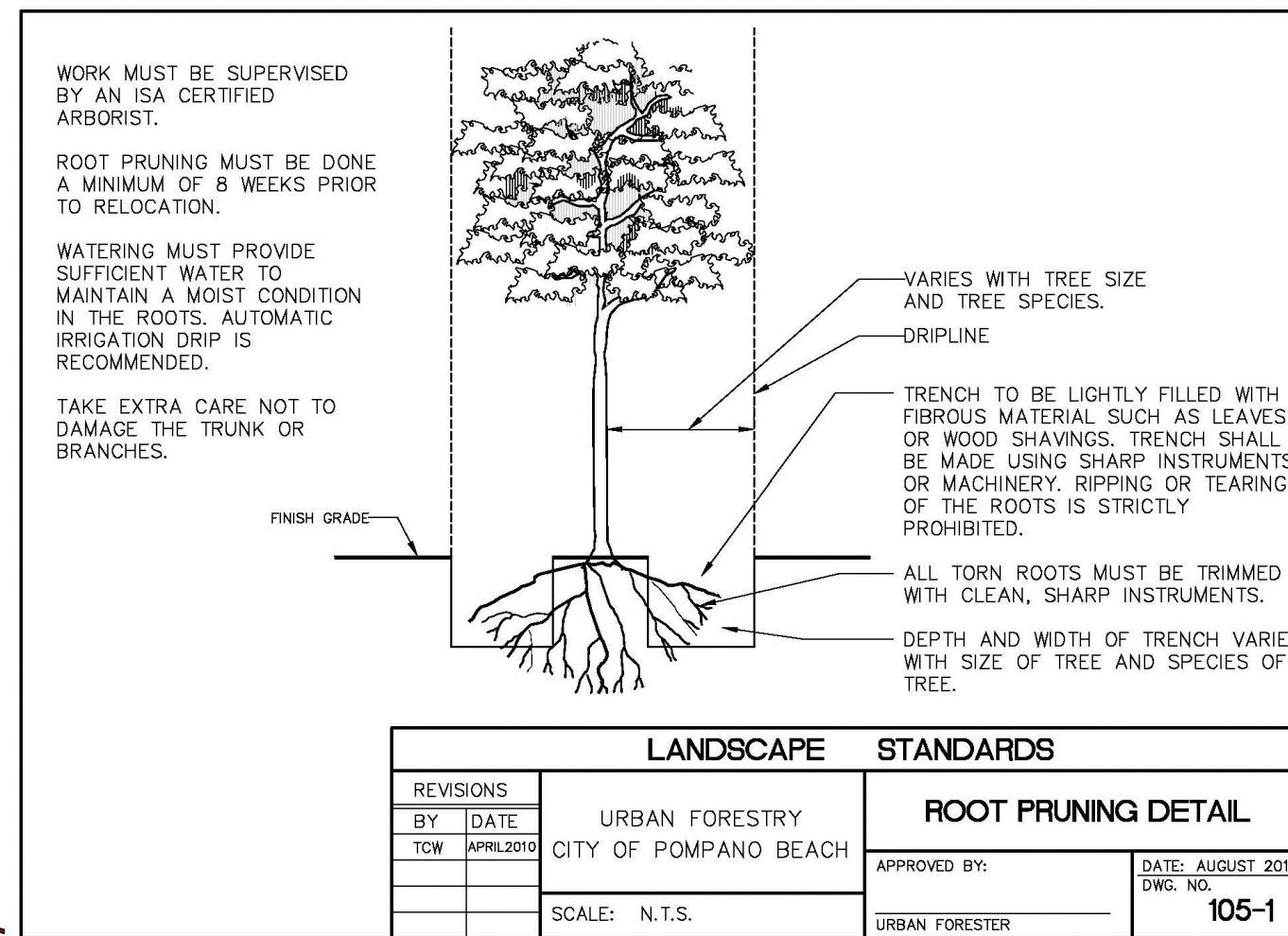


NOTES:

- PER CITY ORDINANCE(S) 50.02(A)(4) AND 100.35(E) STREET TREES SHALL NOT BE PLACED ON TOP OF OR 5'-0" ON EITHER SIDE OF ANY CITY OWNED UTILITY INFRASTRUCTURE.
- NO TREES, SHRUBBERY OR OBSTRUCTION SHALL BE PLACED WITHIN A 3'-0" RADIUS OF A CITY OWNED SEWER LATERAL CLEANOUT OR WATER 4/OR REUSE METER.
- A PRE-CONSTRUCTION MEETING WITH CITY OF POMPANO BEACH, URBAN FORESTRY, IS REQUIRED BEFORE ANY PLANT MATERIAL IS INSTALLED ON SITE.
- ALL ROAD ROCK, CONCRETE, ASPHALT AND OTHER NOT NATURAL MATERIALS SHALL BE REMOVED FROM PLANTING AREAS PRIOR TO LANDSCAPE INSTALLATION.
- ALL TREE WORK WILL REQUIRE PERMITTING BY A REGISTERED BROWARD COUNTY TREE TRIMMER.
- ALL TREES DESIGNATED AS SINGLE TRUNK SHALL HAVE A SINGLE, RELATIVELY STRAIGHT, DOMINANT LEADER, PROPER STRUCTURAL BRANCHING AND EVEN BRANCH DISTRIBUTION. TREES WITH BARK INCLUSION, TIPPED BRANCHES, AND CO-DOMINANT TRUNKS WILL NOT BE ACCEPTED. TREES WITH GIRDLING, INTACT LEADER GIRDLING AND/OR PLUNGING ROOTS WILL BE REJECTED.
- ALL EXISTING TREES WILL BE PRUNED BY AN ISA CERTIFIED ARBORIST UNDER THE DIRECTION OF A BCMA or ASCA REGISTERED CONSULTING ARBORIST.



Trees, Palm, Shrub and other Plant Transplanting/Relocating Detail - Recommended Notes:

The American National Standard for Tree Care Operations - Tree, Shrub, and Other Woody Plant Maintenance - Standard Practices (Transplanting) ANSI A300(Part 6)-2005 must be adhered to in its entirety for all relocating/transplanting of trees and shrubs. ANSI A300 (Part 6)-2005 includes the following:

- 60 - Transplanting Standards
- 61 - Normative References
- 62 - Definitions
- 63 - Transplanting Practices

The transplanting objectives shall be established prior to beginning the operation. These objectives may be presented in a report format for permitting purposes.

A feasibility and suitability assessment shall be conducted prior to recommending transplanting. Specifications for transplanting should be based on the assessment. See the Checklist in Annex A of ANSI A300 (Part 6)-2005. This assessment may be presented in a report format for permitting purposes.

